



# newsletter

ISSUE 5  
NOVEMBER 2009

## eco-resolutions

MAKE YOUR NEW YEARS  
RESOLUTION GREEN THIS  
YEAR!

I WILL TURN OFF MY  
APPLIANCES AT THE POWER  
POINT THIS YEAR

I WILL REQUEST PAPER FREE  
BANK STATEMENTS THIS YEAR

I WILL CATCH THE BUS TO  
WORK THIS YEAR

I WILL NOT USE GLAD WRAP  
THIS YEAR

I WILL ALWAYS TAKE MY  
GREEN BAGS TO THE  
SUPERMARKET THIS YEAR

I WILL WATER MY PLANTS  
WITH RECYCLED WATER THIS  
YEAR

I WILL LIMIT MY PRINTING IN  
THE OFFICE THIS YEAR

I WILL NOT BUY BOTTLED  
WATER THIS YEAR

I WILL TAKE MY OWN CUP TO  
THE CAFE FOR MY COFFEE  
THIS YEAR

I WILL REFUSE PLASTIC BAGS  
THIS YEAR

[www.eco-style.com.au](http://www.eco-style.com.au)  
e: [mail@eco-style.com.au](mailto:mail@eco-style.com.au)  
p: (03) 6234 6077  
5 Mathers Lane  
GPO Box 37, Hobart, 7001



*Landscape project and playground at Lutana*

## Eco-style news and events:

We have had a very busy quarter!  
The Pickers Hut at Cygnet won an HIA award for best custom built house for under \$300k, built by In2construction and designed by Eco-style.

Wendy is back from a seven week trip to Europe, refreshed and inspired by European architecture. Emily has returned to work in the office for her uni break. Emily will be completing her final year of architecture in Melbourne next year. Our office baby Xavier has turned one and started walking on his birthday!

We have completed work for upgrades at several polytechnic campuses' which will commence construction before Christmas. Construction of tourist accommodation at Cygnet is completed as well as our first Timbercrete house at Sandfly and landscape design in Lutana.

Other projects under construction are a renovation in Dynnyrne, new homes in Tranmere, Bruny Island and Cygnet. We are currently working on a subdivision design in Tranmere and several new homes in Geilston Bay, Dysart, Fern Tree, Melrose to name a few!

We wish you all a very Merry Christmas and a prosperous New Year. We will be closing the office and having a well deserved holiday from the 23<sup>rd</sup> of December for three weeks and look forward to getting back into it next year refreshed and motivated!

## eco-advice: how to green your Christmas:

Think about your impact on the earth this Christmas, what you buy, what you eat and drink, what you throw away.....

**Make all your gifts green!** Buy locally - Hobart has a great number of talented crafts people and artists. Check out *The Market* on December 13 or [themarkethobart.blogspot.com](http://themarkethobart.blogspot.com)

**Eat green food!** Try for more organic or locally grown food this Christmas – Tassie has an abundance of excellent produce for the festive season.

**Drink green wine!** There are a number of wines now that are organic or produced sustainably – have a look at your local bottle shop.

**Make your wrapping green!** Skip the wrapping paper and use clay pots, mixing bowls, cute antique tea cups or make cloth bags out of old t-shirts.

**Have green decorations!** Skip the energy sucking lights and go for candles, have a live Christmas tree that will get bigger each year.

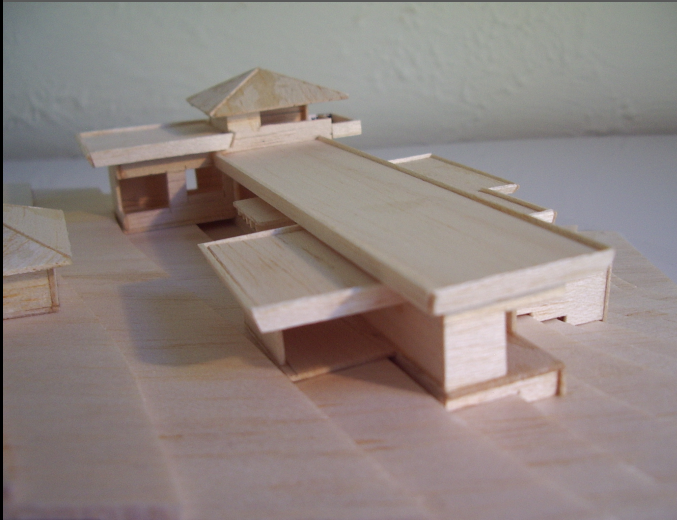
**Have a green Christmas lunch!** Skip the restaurants and go for a bushwalk and have a picnic or go to the beach for a relaxed no-fuss day

*Timbercrete house under construction.*



## Eco-style Services

- architecture and design
- commercial and residential projects
- home sustainability assessments
- commercial sustainability assessments
- carbon footprint measuring
- eco product sales



*Design model of new residence at Binalong Bay*

### Feature project: New residence at Binalong Bay Currently in design process

The brief was for a sustainable dwelling with the aesthetics of 'Frank Lloyd Wright goes to Japan'.

The site is an environmentally sensitive, private and protected block a stone's throw from the water with glimpses of the bay through the trees.

The main house, studio and garage create a pavilion compound on the site. The design incorporates multiple split levels, private sleeping wings, a shared central living space, internal courtyards and a separate self contained studio retreat.

All living spaces have a northerly orientation to maximise passive solar gain and the views, heating zones, thermal mass, double glazing and solar systems maximise energy efficiency and waste water will be treated on site all contributing to the sustainability of this development. Site disruption has been minimised by designing the spaces around mature trees.

The forms of the house and the strong horizontal roof lines are reminiscent of Frank Lloyd Wright's notable work. The textures and colours of timber, masonry and stone blend with the environment and the details have an Asian influence, creating a calming, harmonious place to live.

## related business: SAFE (Safety and Fire Equipment)

Excerpts from the Tas Fire Service "Prepare to Survive"

As we rapidly approach the Fire Season we should all now be aware of how important it is to be prepared in case of bush fire. If you live in an area that could be susceptible to bush fire then you should already have started to prepare.

Have you considered what type of plants you have in your garden and what effect they could have in a Bush Fire situation?

"During a Bushfire, the type, amount and arrangement of vegetation are critically important for the survival of your house. The fuel for bushfires is the main danger factor that people can control. Hazard reduction activities such as clearing and fuel reduction burning; aim to lower the vegetation hazard to a safe level. Because some plants have a higher resistance to burning than others, we can use low flammability plants for added protection in addition to normal maintenance and hazard reduction.

The influence of plant shape is a lot more subjective, low growing plants and ground covers are better than shrubs, plants with dense foliage are better than those with open airy crowns, plants which don't retain dead material are better than those which hold up lots of fuel, plants with smooth bark are better than those with ribbon and rough bark.

Fire retardant pants can absorb more of the heat of the approaching bushfire without burning the more flammable plants. They can trap embers and sparks and reduce wind speeds near your house if correctly positioned and maintained. Fire resistant ground covers can be used to slow the travel of fire through the litter layer and fire resistant shrubs can be used to separate the litter from the trees above."

These are just a few paragraphs from a larger article contained on the Tas Fire web page [www.fire.tas.gov.au](http://www.fire.tas.gov.au) originally written by Mark Chladil and Jennifer Sheridan. I strongly recommend that you take the time and read the full article on that site. It contains a full list of native and introduced plants and their flammability rating along with information about **Building protection zones** and **Fuel modified zones** around your home.

In respect to Building protection zones and Fuel Modification zones there is now a product available to assist in protecting your home. **Thermo-Gel** is a product available to home owners from Safety and Fire Equipment at 110 Gormanston Rd Derwent Park. **Thermo-Gel** is a concentrate that when added to water and sprayed from a standard garden hose, forms a heat absorbing and fire resistant gel barrier that can protect assets such as buildings, vehicles or machinery and can be sprayed onto vegetation.

**For further information Thermo-Gel please call Mick Sherman at SAFE Safety and Fire Equipment on 6272 9800, 110 Gormanston Rd Derwent Park.**